



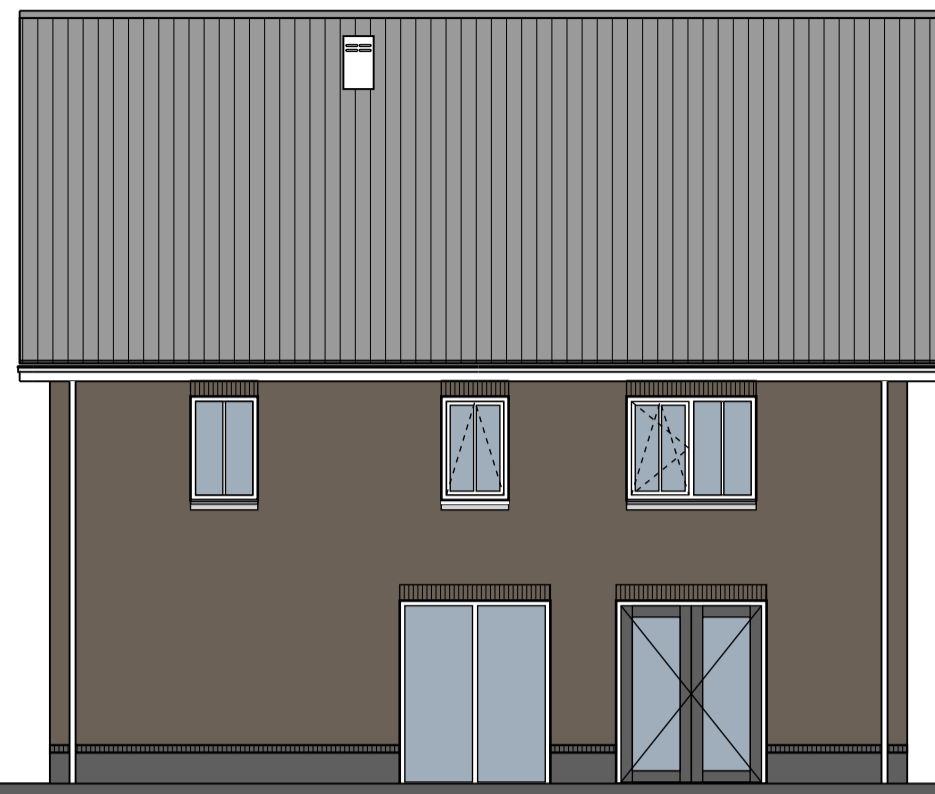
Bouwnummer: 01

Voorgevel



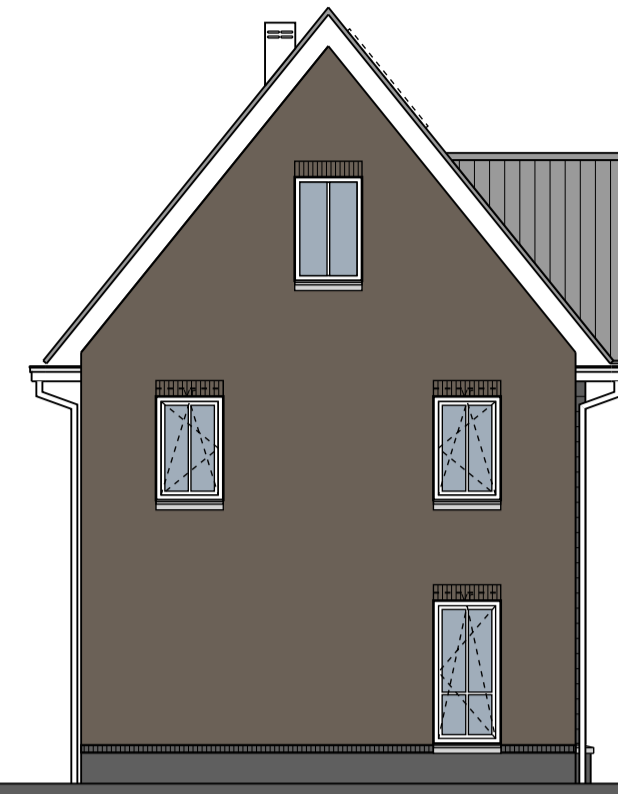
Bouwnummer: 01

Rechtergevel



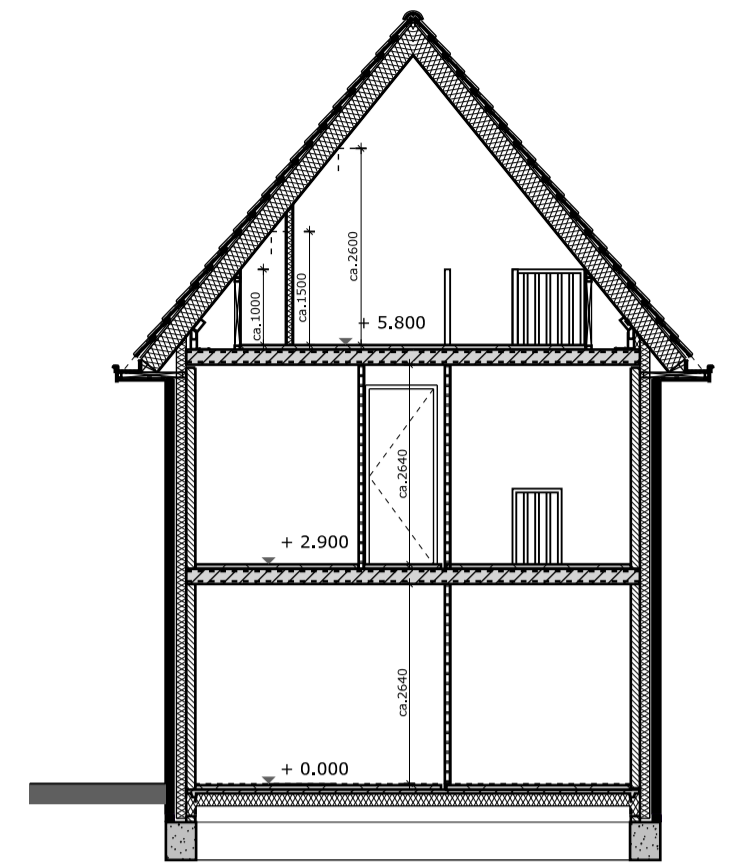
Bouwnummer: 01

Achtergevel

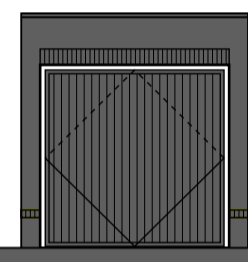


Bouwnummer: 01

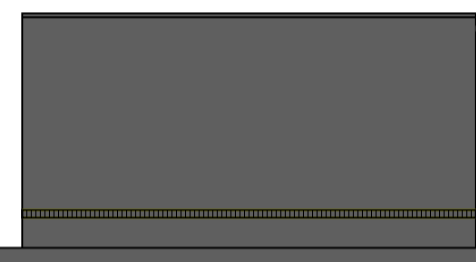
Linkergevel



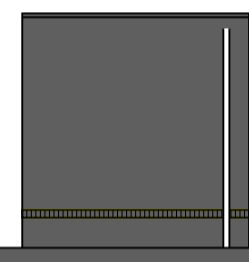
Principe doorsnede



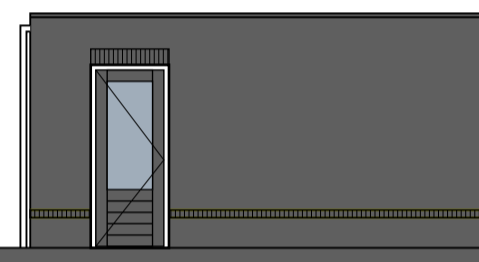
Voorgevel  
Gemetselde berging 3000x6000mm vrijstaand



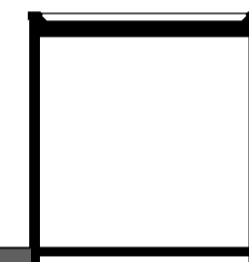
Rechter zijgevel



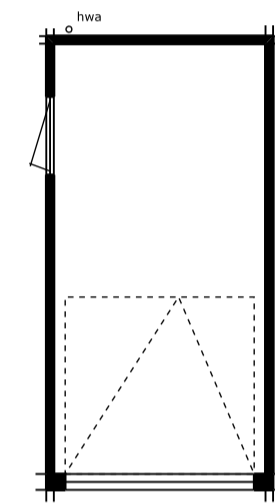
Achtergevel



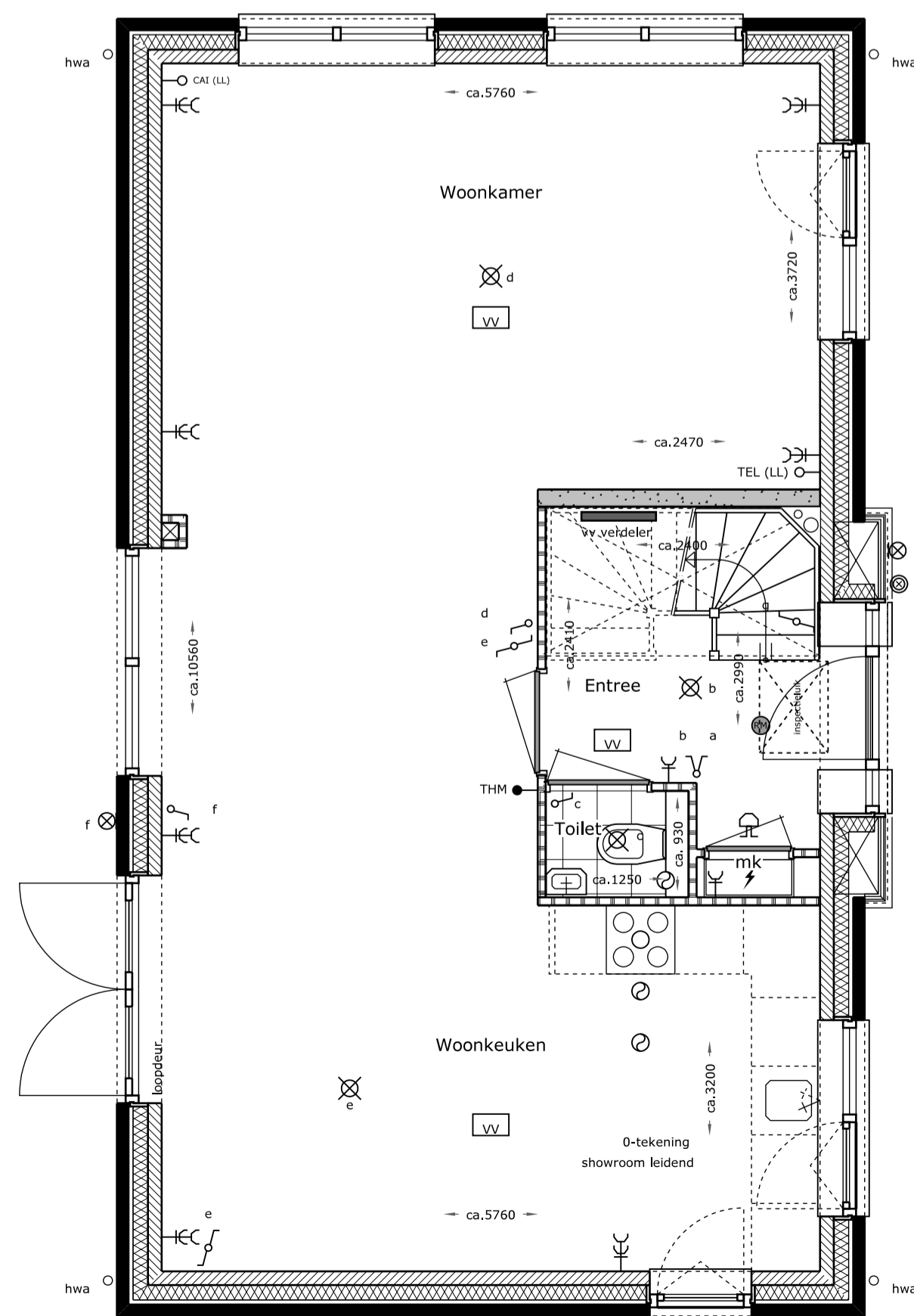
Linker zijgevel



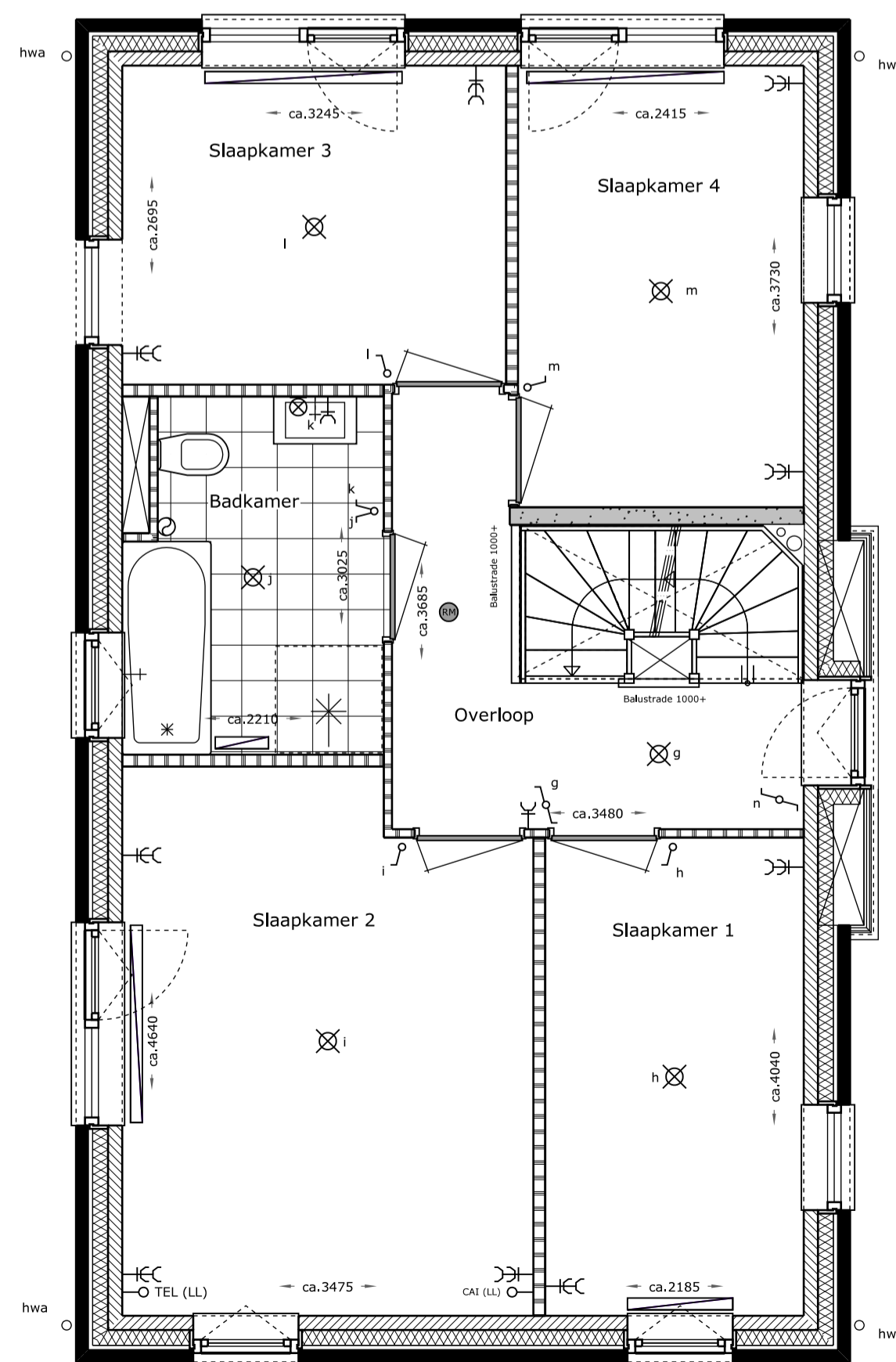
Doorsnede



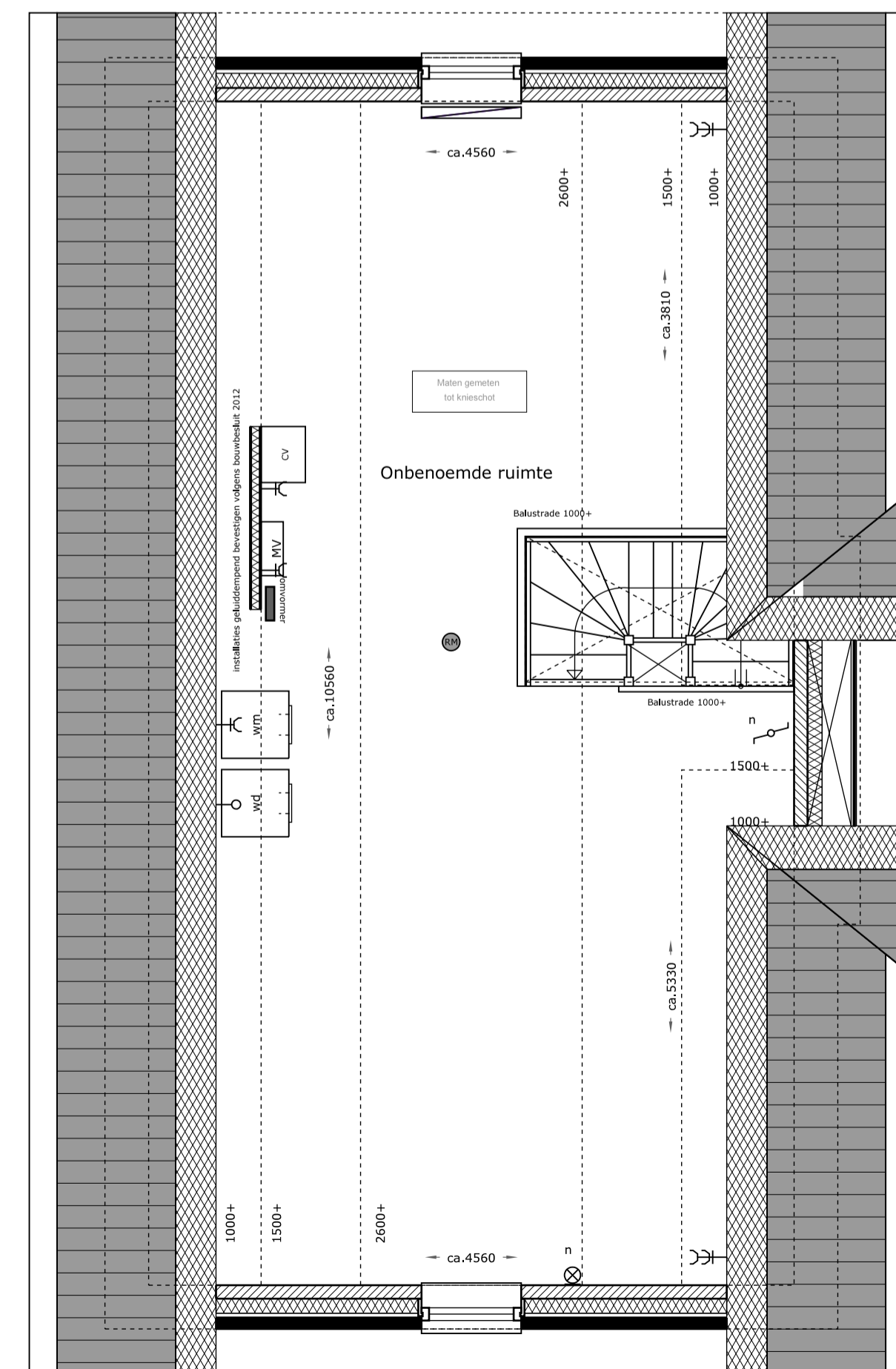
Begane grond



Begane grond



Verdieping



Zolder

### Renvooi bouwkundig

- baksteen
- kalkzandsteen
- lichte scheidingswanden
- o HWA hemelwaterafvoer
- o rookmelder (plafond montage)
- o rookmelder (wand montage)
- o wm wasmachine
- o wd wasdroger
- o mk meterkast
- o stl. standleiding
- o cv centrale verwarming
- o mv mechanische ventilatie
- o mech. ventilatie ventiel
- o aansluiting afzuigkap
- o vloerverwarming
- o radiator
- prefab beton
- beton gewapend
- Isolatie
- Krijtstreepmethode
- toegepast
- draai- kiepraam

### Renvooi elektra

- o beschel
- o drukknop (bel)
- o plafonddichtpunt
- o wandlichtpunt
- o schakelaar
- o wisselschakelaar
- o serieschakelaar (dubbeschakelaar)
- o 3-standenschakelaar ventilatie
- o enkele wandcontactdoos geaard
- o dubbele wandcontactdoos geaard
- o onbedrade leiding
- o bedrade leiding
- o TEL (LL) telefoon (loos)
- o CAI (LL) centrale antenne-installatie (loos)
- o THM thermostaat
- o GAS gasaansluiting

Schaal 1:50/ 1:100

**Burcht**

Vrijstaande woning

Bouwnummer: 01 (blok G2)

Blad: 001

5 juli 2018



**eve**  
ARCHITECTEN