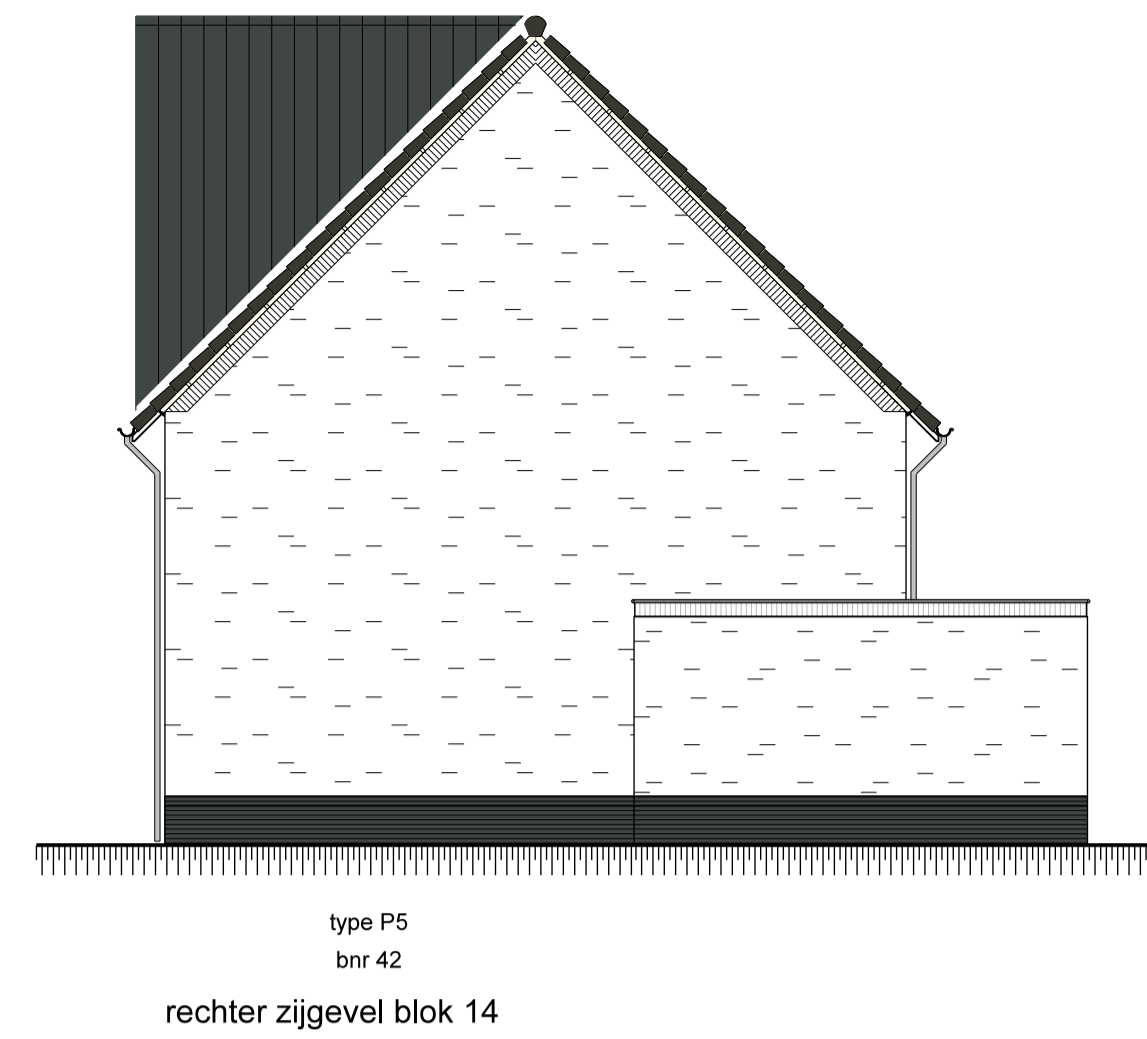
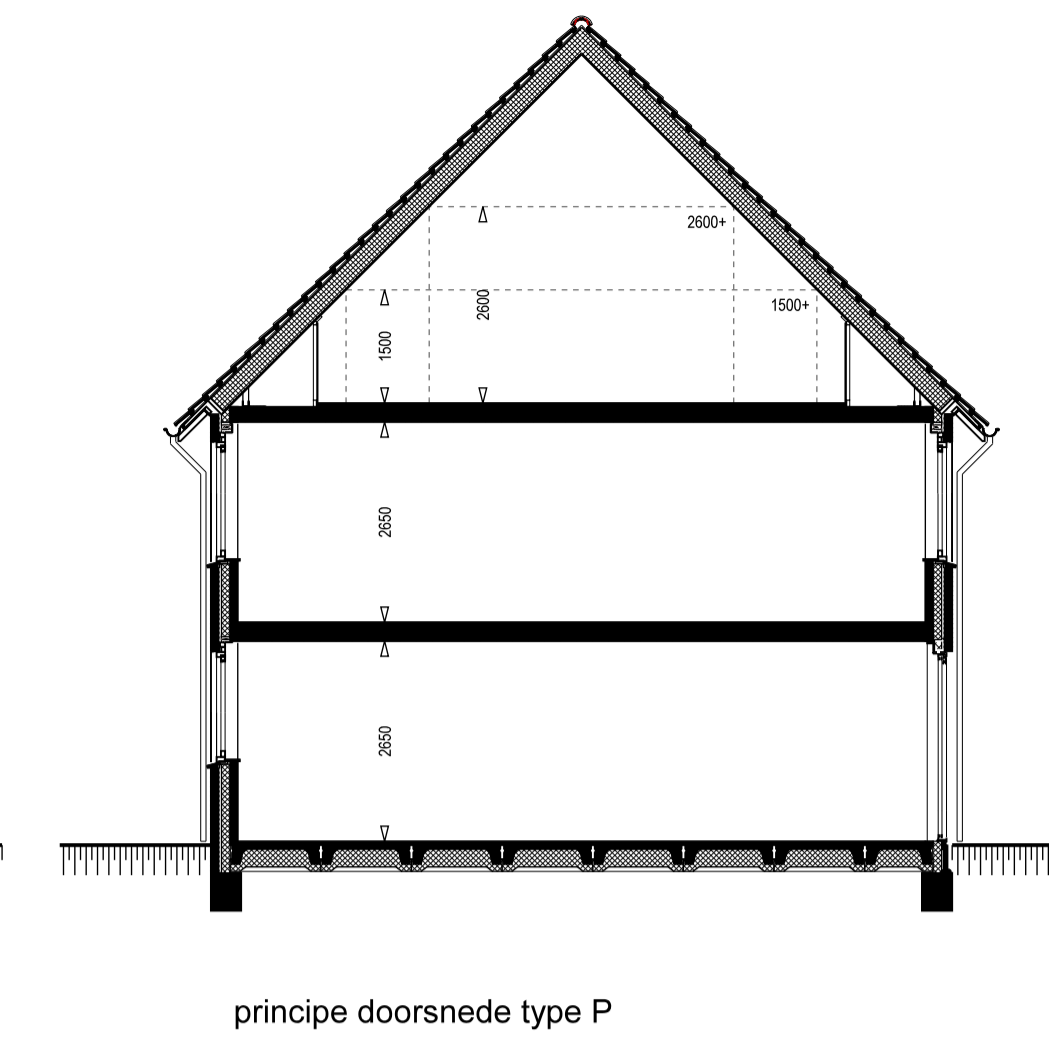




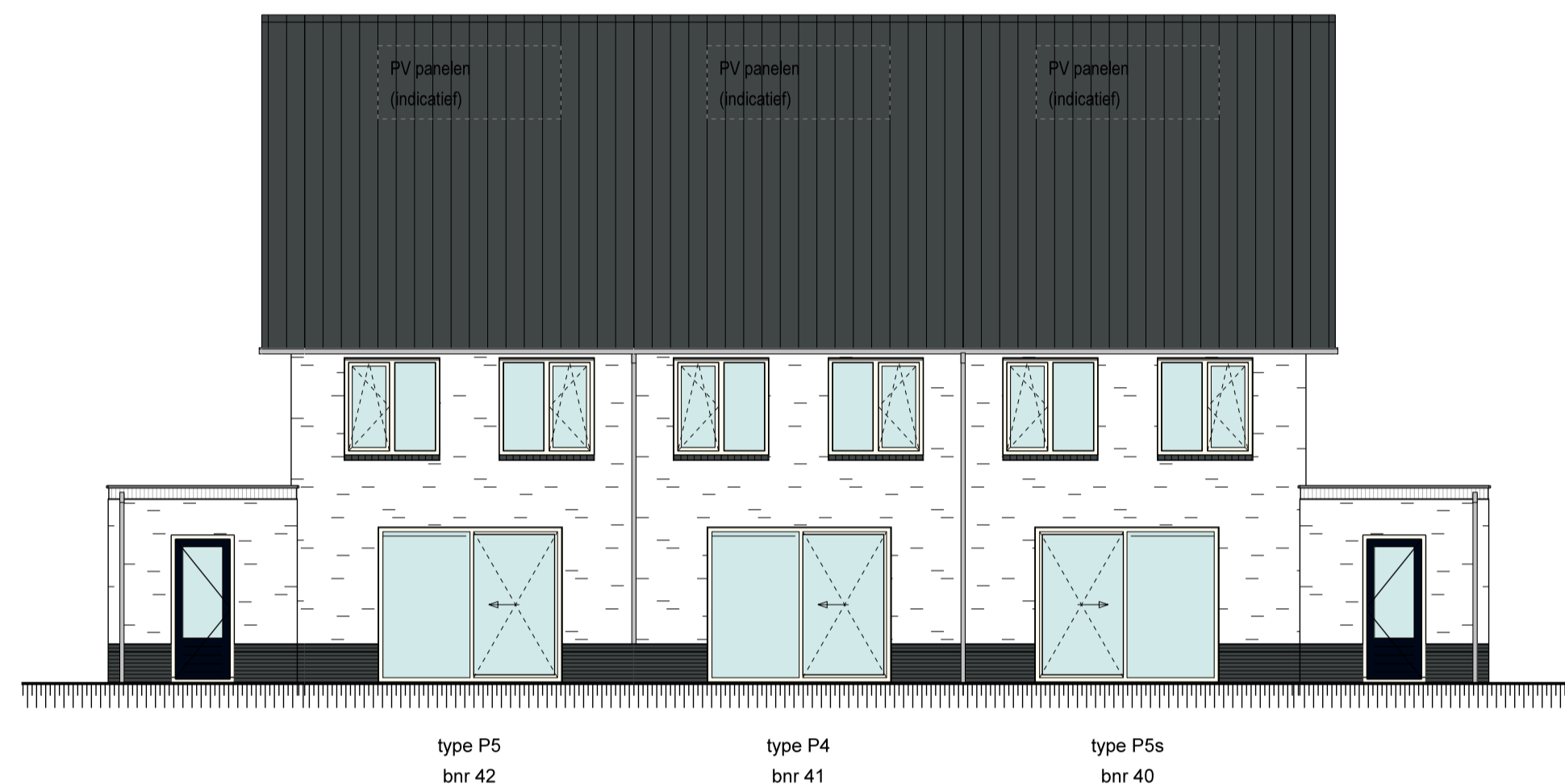
voorgevel blok 14



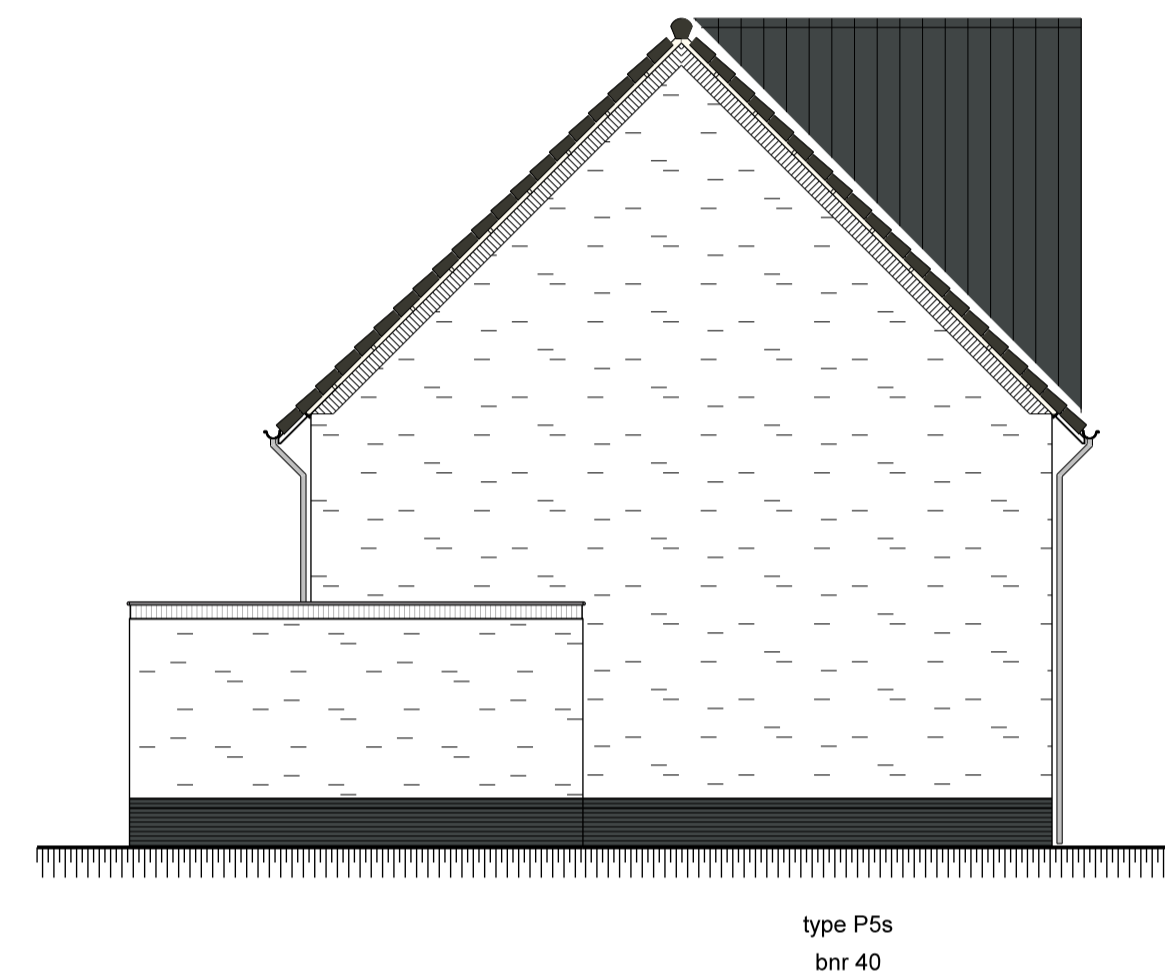
rechter zijgevel blok 14



principe doorsnede type P


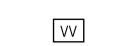
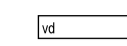




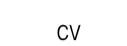








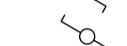


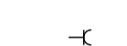
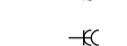









achtergevel blok 14



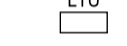


linker zijgevel blok 14

Renvooi

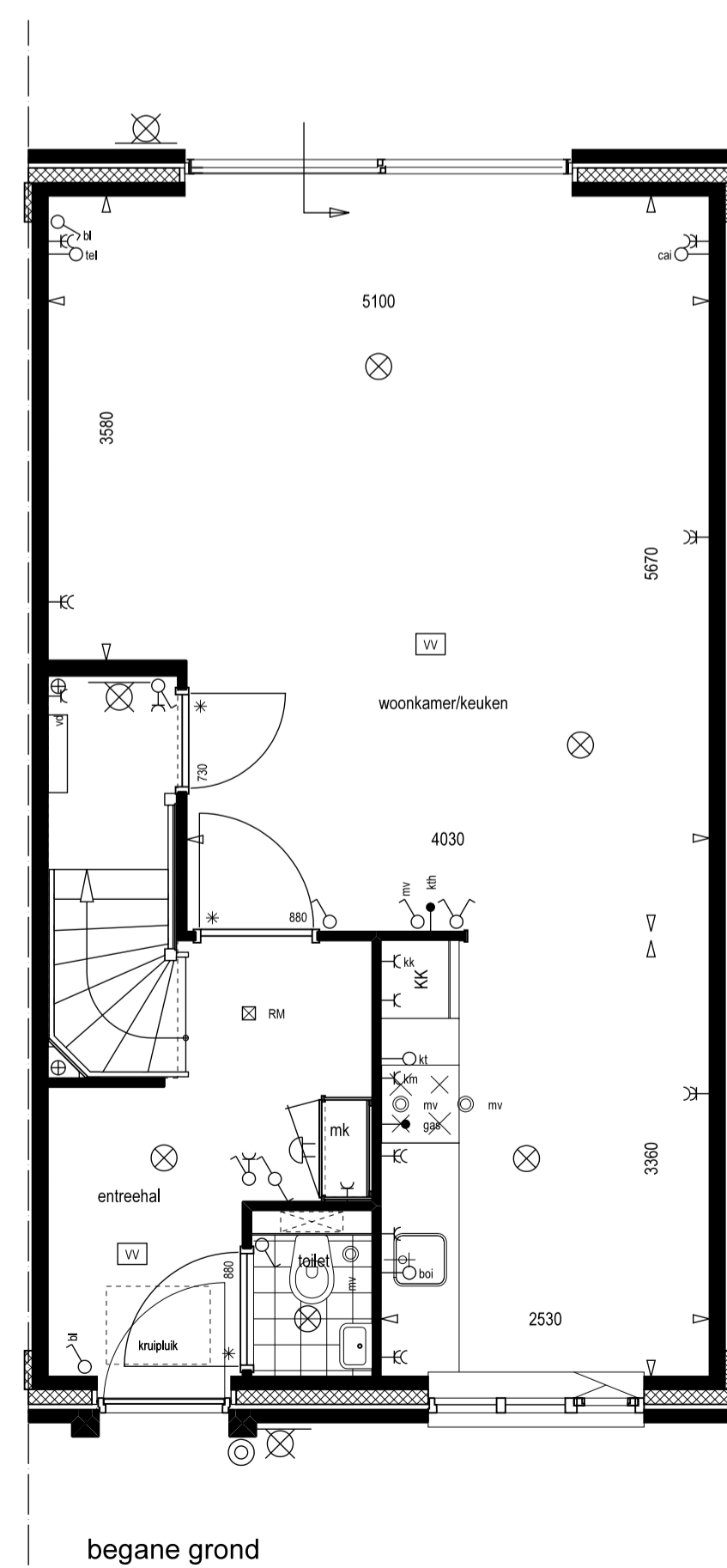
-  radiator
-  vloerverwarming
-  verdeler vloerverwarming
-  RM roommelder
-  WM wasmachine
-  WD wasdroger
-  MK melerkast
-  CV centrale verwarming
-  MV mechanische ventilatie
-  mv ventil mechanische ventilatie
-  belschel
-  drukknop bel
-  plafondlichtpunt
-  wandlichtpunt
-  schakelaar (buitenlicht)
-  wisselbaar (binnenlicht)
-  serieschakelaar
-  bedieningspaneel mechanische ventilatie
-  thermostaat
-  enkele wandcontactdoos geaard
-  dubbele wandcontactdoos geaard
-  ongegrunde leiding
-  bedrade leiding
-  aansluiting kooktoestel
-  aansluiting boiler
-  aansluiting gas
-  telefoon
-  centrale antenne inrichting

Woningen worden, indien nodig, voorzien van PV-panelen.
Aantal en positie afhankelijk van uitkomst energieprestatiecoëfficiënt.

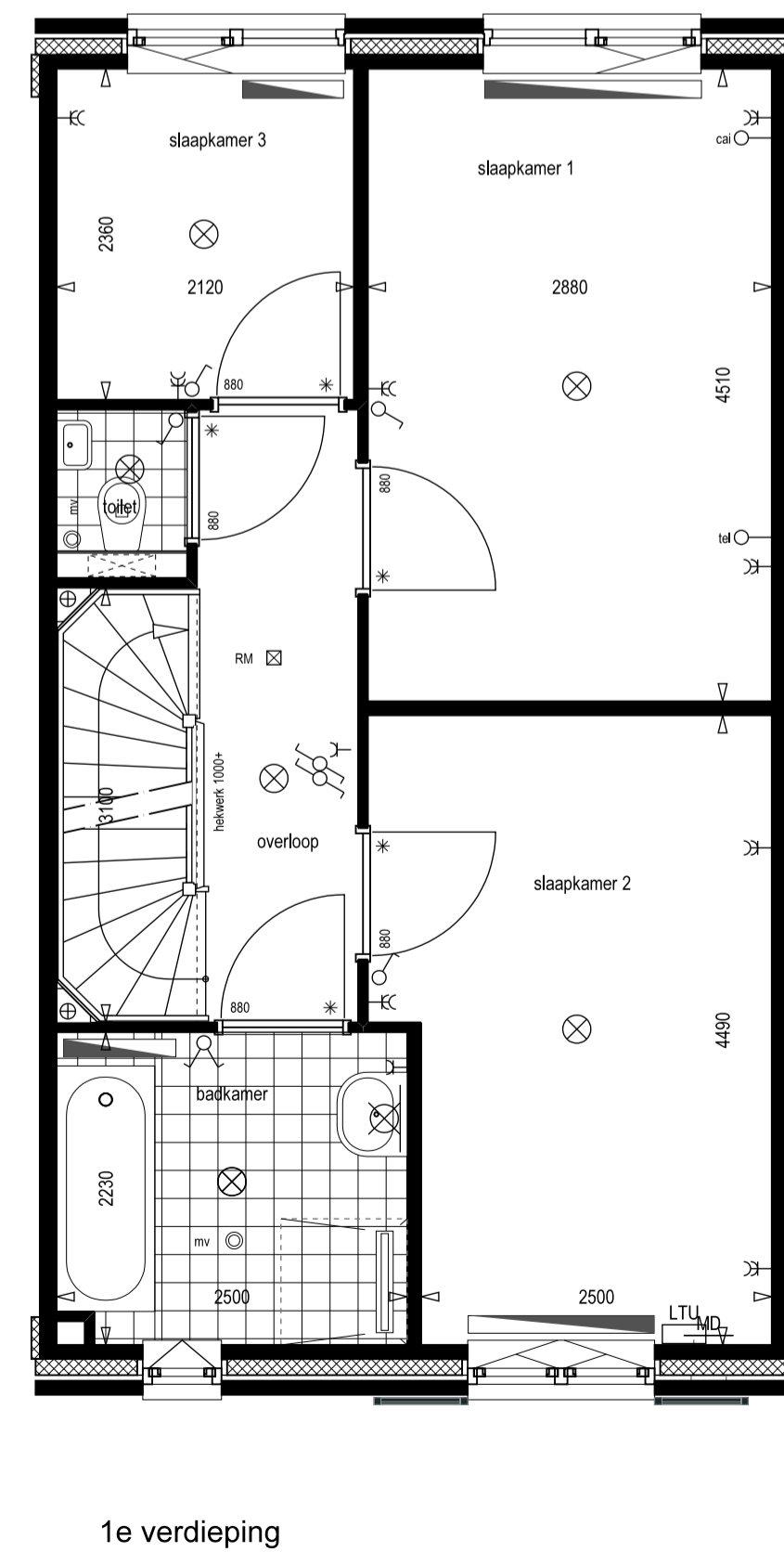
Geluidwerende voorzieningen

-  Sonair A+ luchtvoeunit
-  Sonair A+ gevelrooster
-  Duco Silenzio muurdemper

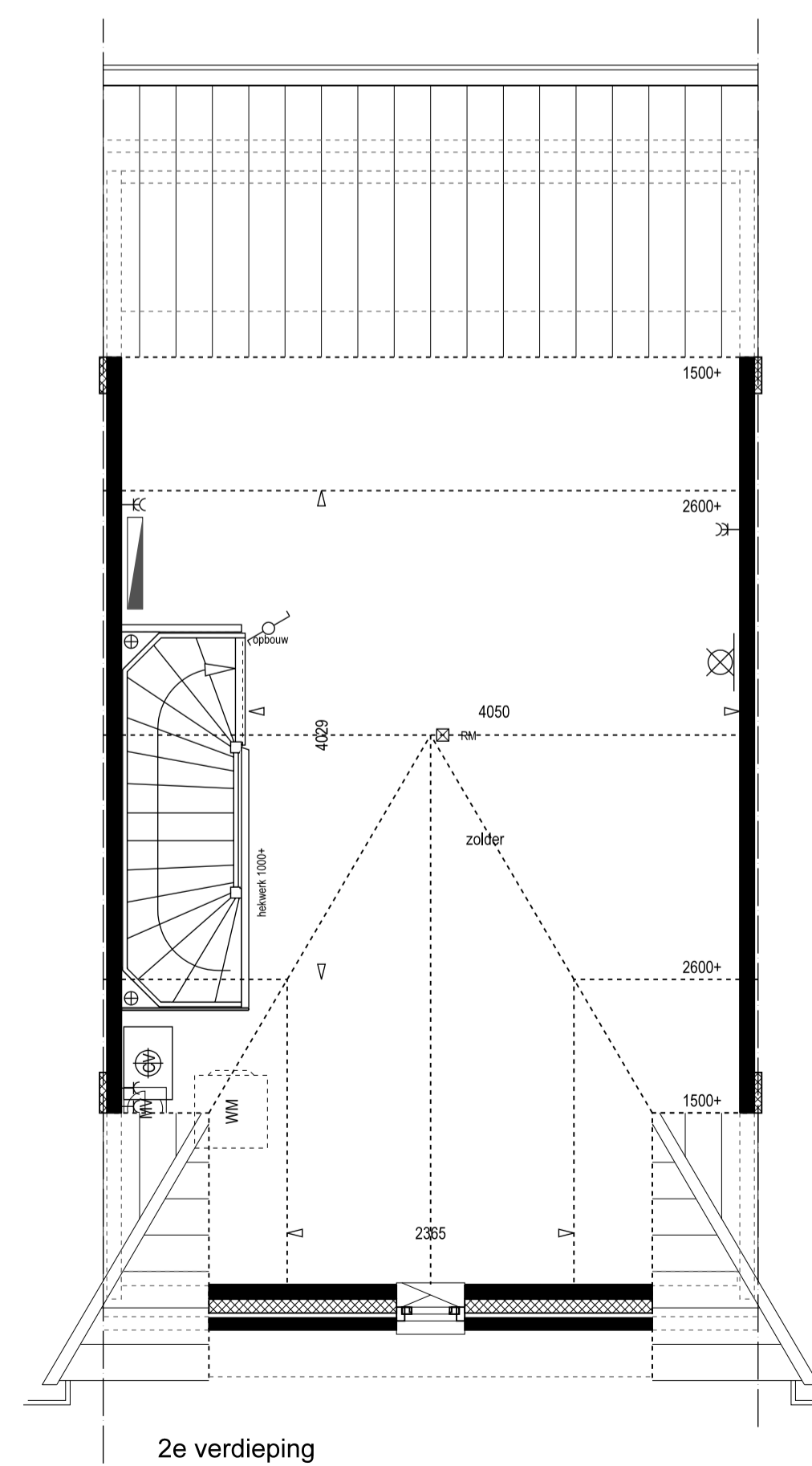
Sonair A+ alleen t.p.v. blok 2, bnr. 4
Duco Silenzio alleen t.p.v. blok 2, bnr. 4



begane grond



1e verdieping



2e verdieping

Schaal 1:50/1:100
Type P4: tussenwoning
Bouwnummer: 19,41
Gespiegeld: 4
Blok: 2,7,14
Blad 010

20-04-2017